

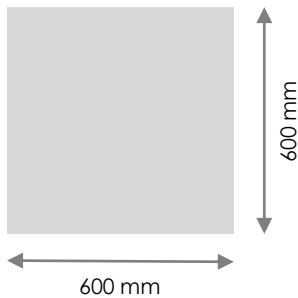
## RAISED ACCESS FLOORS

**PPGca – LF30**

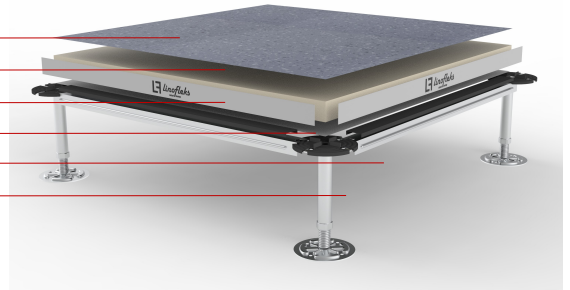
### TECHNICAL DESCRIPTION

Panel nominal dimension 600x600 mm, made of a high density calcium sulphate core (Kg./m3 1500), 30 mm thick.  
 Top covering in gres or antistatic PVC, 2 mm thick, nominal dimension 600x600 mm.  
 Bottom covering with galvanized steel tray, 0.5 mm thick.  
 High mechanical and thermal resistant, PVC ABS edge trim, 0.4 mm thick.

### TECHNICAL CHARACTERISTICS



Top covering ~ 2 mm PVC  
 Calcium sulphate Core ~ 30 mm  
 Edge ~ 0.40 mm  
 Galvanized steel tray ~ 0.50 mm  
 Stringer ~ 1 mm (Used over 25 cm)  
 Pedestal ~ M14 / M16

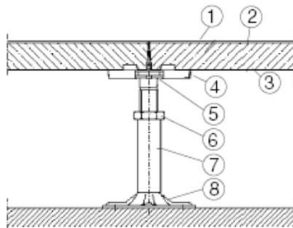


### TECHNICAL SPECIFICATIONS

Ultimate Load	Loading Class	Working load	Flexion	Fire reaction
11,8 kN	4	4,9 kN	Class A	EN 13501-1 A1

### Terms and definitions according to EN 12825

- Safety factor: the factor by which the ultimate load is divided to establish the working load.
- Ultimate load: maximum load at the time of failure of the element during the specified ultimate load test procedure.
- Working load: load given by dividing the ultimate load by the safety factor.
- Distributed load: is an indicative value not defined by EN 12825. It is given by multiplying five times the concentrated load.



1. Floor Covering, steel or 2 mm PVC
2. Floor Panel
3. Steel sheet 0,5 mm galvanized
4. Gasket
5. Pedestal head
6. Hexagonal nut
7. Tube
8. Pedestal base plate glued to the subfloor



#### FASTNESS

Light, modular and easy to handle, the systems are designed to guarantee rapid installation, respecting all the requirements of planarity and orthogonality. The inspection of the individual panels allows a significant reduction in time and maintenance costs.



#### EXTENDED WORKING LIFE & DIMENSIONAL STABILITY

The excellence of the materials used and the production technologies make panels and structures resistant and lasting over time.



#### WALKING COMFORT

The flexural strength ensures an optimal response to the stresses of foot traffic. Upon request they can be supplied with certifications.



#### INSPECTABILITY

100% inspectable, giving easy access to water pipes and electrical cables and permitting easy reconfiguration of rooms.

